

## Miss Lily's Fabulous Feather Boa

**Director:** Michael Barlow      **Adapted by:** Michael Barlow  
**Designer:** Iona McAuley      **Composer:** Lee Buddle  
**Lighting designer:** Karen Cook

Adapted to the stage by Michael Barlow from the book by Margaret Wild, Miss Lily's Fabulous Feather Boa is an inspirational story about having the courage to be who you are and the power of friendship.

Set in tropical Queensland, it begins with a lonely potoroo, a timid marsupial, arriving at a holiday house run by Miss Lily, a tango dancing crocodile.

It's not the only surprise in store for this shy creature. Indeed, his hopes of a peaceful rest are shattered by a series of competitive games organised by the more outgoing guests of wombats and koalas.

He retreats into his lonely world, consumed by his belief that he is the last of his kind.

Just as the potoroo is about to lose all hope, Miss Lily puts on a floorshow with her fabulous feather boa and as the boa works its magic on the potoroo his world changes forever.

Let the magic of the fabulous feather boa weave its spell on you too in a fun-filled show that celebrates courage, honesty and a little marsupial pride!



## Technical Requirements

<b>Stage size (min)</b>	8m wide x 7m deep x 4.5m high
<b>Sound</b>	SPPT tour with all sound cues on one laptop, to be patched into the venue sound system. Please note sound and lighting must be operable from the same position.
<b>Lighting</b>	One front of house lighting bar, three overhead lighting bars. Approx 30 lamps required, approx 20 fresnels and 10 profiles.
<b>Bump in / out</b>	5 hours bump in, 3 hours bump out
<b>Touring information</b>	Minimum touring party of four (4) – three performers and production manager/operator. 1 in-house lighting rigger/operator required at each venue.
<b>Flexibility</b>	Split week buys. Performers can perform 2 times a day, with a maximum of 12 performances per week. Performance times need to be in consideration of the Award conditions under the Live Performance Award 2010, providing appropriate breaks between performances.
<b>Royalties</b>	10%



## Marketing & Audience information

<b>Target market</b>	4 – 12 year olds and their families
<b>Performance history</b>	2012 Spare Parts Puppet Theatre
<b>Billing requirements</b>	Spare Parts Puppet Theatre presents <i>Miss Lily's Fabulous Feather Boa</i> based on the book by Margaret Wild
<b>Marketing material provided</b>	High res images, broadcast quality footage, artwork files, media release & teachers notes
<b>Cast available for press calls?</b>	Yes
<b>Cast available for Q&amp;A session during season?</b>	Yes
<b>Other</b>	Spare Parts Puppet Theatre will promote performances through its e-news and social media properties (Facebook, Twitter, Instagram)

## CONTACT

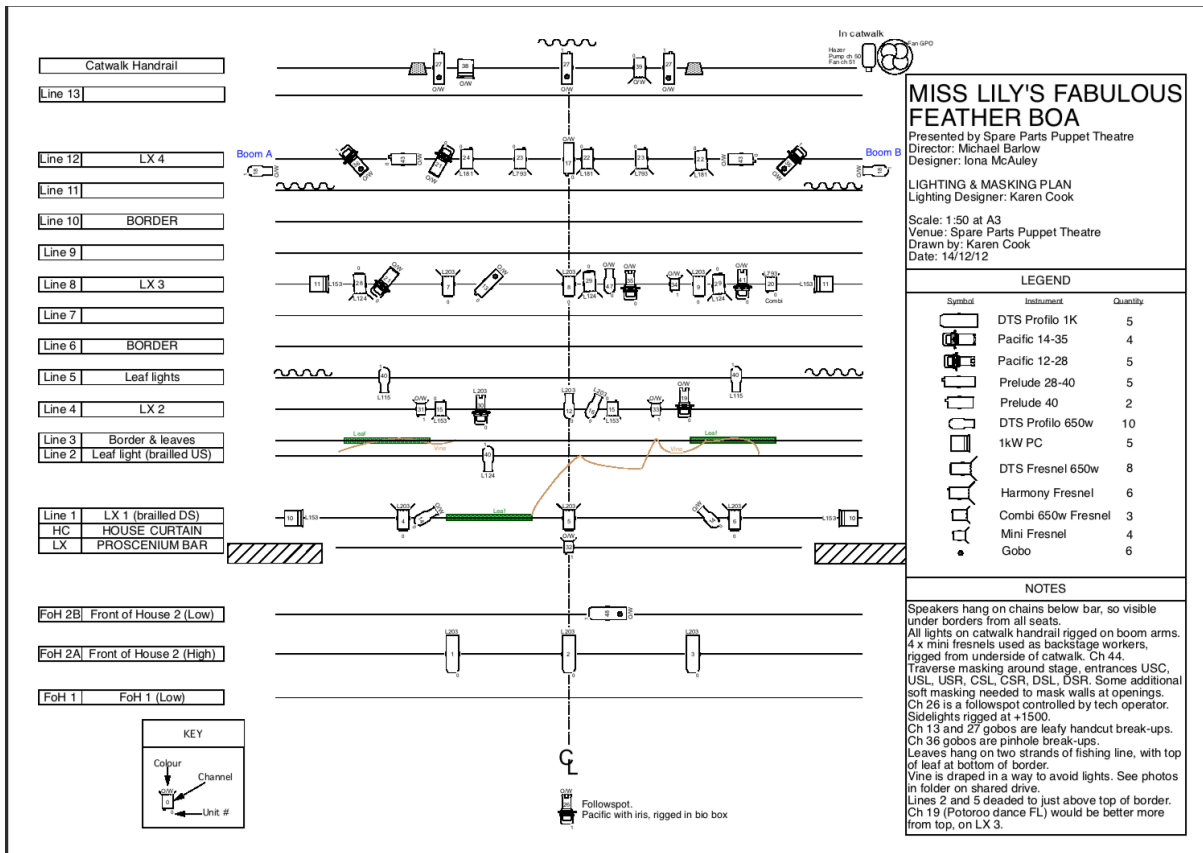
Natalie Bell  
[ep@sppt.asn.au](mailto:ep@sppt.asn.au)

Susan Clarke  
[producer@sppt.asn.au](mailto:producer@sppt.asn.au)

+61 8 9335 5044 // +61 403 990 486

+61 8 9335 5044

# LIGHTING PLOT



## MISS LILY'S FABULOUS FEATHER BOA

Presented by Spare Parts Puppet Theatre  
 Director: Michael Barlow  
 Designer: Iona McAuley  
 LIGHTING & MASKING PLAN  
 Lighting Designer: Karen Cook  
 Scale: 1:50 at A3  
 Venue: Spare Parts Puppet Theatre  
 Drawn by: Karen Cook  
 Date: 14/12/12

LEGEND		
Symbol	Instrument	Quantity
	DTS Profilo 1K	5
	Pacific 14-35	4
	Pacific 12-28	5
	Pacific 28-40	5
	Pacific 40	2
	DTS Profilo 650w	10
	1kW PC	5
	DTS Fresnel 650w	8
	Harmony Fresnel	6
	Combi 650w Fresnel	3
	Mini Fresnel	4
	Gobo	6

**NOTES**

Speakers hang on chains below bar, so visible under borders from all seats.  
 All lights on catwalk handrail rigged on boom arms.  
 4 x mini fresnels used as backstage workers, rigged from underside of catwalk. Ch 44.  
 Traverse masking around stage, entrances USC, USL, USR, CSL, CSR, DSL, DSR. Some additional soft masking needed to mask walls at openings.  
 Ch 26 is a followspot controlled by tech operator.  
 Sidelights rigged at +1500.  
 Ch 13 and 27 gobos are leafy handcut break-ups.  
 Ch 36 gobos are pinhole break-ups.  
 Leaves hang on two strands of fishing line, with top of leaf at bottom of border.  
 Vine is draped in a way to avoid lights. See photos in folder on shared drive.  
 Lines 2 and 5 deaded to just above top of border.  
 Ch 19 (Potoroo dance FL) would be better more from top, on LX 3.